



WHENEVER
WHATEVER
WHICHEVER
HOWEVER
WHEREVER
:
and
FOREVER!

CREATE with
CONFIDENCE

X-A5 SPECIFICATIONS

Model Name		FUJIFILM X-A5
Number of effective pixels		24.2 million pixels
Image sensor		23.5mm×15.7mm (APS-C) CMOS with primary color filter
Sensor Cleaning system		Ultra Sonic Vibration
Storage media		SD Card (-2GB) / SDHC Card (-32GB) / SDXC Card (-256GB) UHS-I**
File format	still image	JPEG (Exif Ver 2.3 ¹⁾ RAW (RAF format)/RAW+JPEG (Design rule for Camera File system compliant, DPDF-compatible)
	movie	Movie File Format: MOV Movie Video Compression: H.264 Audio: Linear PCM Stereo
Number of recorded pixels		L: (3:2) 6000×4000 (16:9) 6000×3376 (1:1) 4000×4000 M: (3:2) 4240×2832 (16:9) 4240×2384 (1:1) 2832×2832 S: (3:2) 3008×2000 (16:9) 3008×1688 (1:1) 2000×2000
Lens mount		FUJIFILM X mount
Sensitivity		Standard Output Sensitivity: AUTO2 / AUTO3 (up to ISO6400) / ISO200 to 12800 (1/3 step) Extended output sensitivity: ISO100 / 25600 / 51200
Exposure control		TTL 256-zones metering, Multi / Spot / Average
Exposure mode		P (Program AE) / A (Aperture Priority AE) / S (Shutter Speed Priority AE) / M (Manual Exposure)
Exposure compensation		-5.0EV ~ +5.0EV, 1/3EV step (movie recording: -2.0EV ~ +2.0EV)
Face/Eye Detection		Yes
Shutter type		Focal Plane Shutter
Shutter speed	Mechanical Shutter	4 sec. to 1/4000 sec. (P mode), 30 sec. to 1/4000 sec. (Other modes) Bulb mode (up to 60 min), TIME: 30 sec. to 1/4000 sec.
	Electronic Shutter²⁾	4 sec. to 1/32000 sec. (P mode), 30 sec. to 1/32000 sec. (Other modes) Bulb mode: 1 sec. fixed, TIME: 30 sec. to 1/32000sec.
	Mechanical+Electronic Shutter	4 sec. to 1/32000 sec. (P mode), 30 sec. to 1/32000 sec. (Other modes) Bulb mode (up to 60 min), TIME: 30 sec. to 1/32000 sec.
	Synchronized shutter speed for flash	1/180 sec. or slower
Continuous shooting		Approx. 6.0 fps (JPEG: max. approx. 10 frames) Approx. 3.0 fps (JPEG: max. approx. 50 frames) * Recordable frame number may vary depending on the type of memory card used. * The frame rate varies with shooting condition and the number of images recorded.
Self-timer		2sec. / 10sec. / Smile / Buddy (LV.1 - LV.3) / Group (1-4 subjects) / Face Auto Shutter
Flash		Manual pop-up flash (Super Intelligent Flash) Guide number: Approx 4 (ISO100-m) / Approx 5.7 (ISO200-m)
LCD monitor		3.0-inch, aspect ratio 3:2, approx. 1,040K-dot TFT-type, TFT color LCD monitor
Movie recording		4K 3840×2160 Continuous recording: up to approx. 5 min. FullHD 1920×1080 59.94p / 50p / 24p / 23.98p, Continuous recording: up to approx. 14 min. HD 1280×720 59.94p / 50p / 24p / 23.98p, Continuous recording: up to approx. 27 min. High Speed Movie 1280×720 1.6x / 2x / 3.3x / 4x *For 4K movie recording, use a card with UHS Speed Class 3 or higher
Touch screen		Shooting Mode: Shooting, AF, Focus area, Focus mode, Digital zoom, Film simulation select, Adv. Filter select, Portrait enhancement level, touch AF in movie Display Mode: Swipe, Zoom, Pinch-in / Pinch-Out, Double-tap, Drag
Wireless transmitter	Standards	IEEE 802.11b/g/n (standard wireless protocol)
	Access mode	Infrastructure
	Encryption	WEP/WPA/WPA2 midex mode
Bluetooth®	Standards	Bluetooth Ver. 4.1 (Bluetooth low energy)
	Operating frequency	2402 - 2480MHz (Center frequency)
Terminal	Video output	-
	Digital interface	USB 2.0 High-Speed / micro USB terminal
	HD output	HDMI Micro connector (Type D)
	Microphone/remote release connector	ø2.5 mm 3-pole mini jack
Power supply		NP-W126S Li-ion battery (included)
Dimensions / Weight		116.9 (W) mm × 67.7 (H) mm × 40.4 (D) mm / 4.6 in. (W) × 2.7 in. (H) × 1.6 in. (D) (Minimum depth: 31.6 mm / 1.2 in.) Approx. 361g / 12.7 oz. (including battery and memory card) Approx. 311g / 11.0 oz. (excluding accessories, battery and memory card)
Operating Temperature	Temperature	0 - 40°C / 32-104°F
	Humidity	10 - 80% (no condensation)
Battery life for still images⁴⁾		approx 450 frames (with XF35mmF1.4 R lens)
Starting up period		Approx. 0.4 sec., when High Performance mode set to ON Approx. 0.8 sec., when High Performance mode set to OFF *Fujifilm research
Accessories included		Li-ion battery NP-W126S, AC power adapter, Plug Adapter, USB cable, Shoulder strap, Body cap, Owner's manual

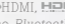
*1 Please see the Fujifilm website (http://www.fujifilm.com/support/digital_cameras/compatibility/card/x/) to check memory card compatibility.

*2 Exif 2.3 is a digital camera file format that contains a variety of shooting information for optimal printing.

*3 The Electronic Shutter may not be suitable for fast-moving objects. Flash can not be used.

*4 Approximate number of frames that can be taken with a fully-charged battery based on CIPA standard.

To ensure correct usage, read owner's manual carefully before using your equipment.
All photos, illustrations, drawings and other images in this brochure are intended for illustrative purposes only.

*Windows is either a registered trademark or trademark of Microsoft Corporation in the United States and/or other countries. *Macintosh, Mac OS and macOS are trademarks of Apple Inc., registered in the U.S. and other countries. *HDMI,  and High-Definition Multimedia interface are either trademarks or registered trademarks of HDMI Licensing. *The  word mark and logos are registered trademarks owned by the Bluetooth SIG, Inc. and any use of such marks by FUJIFILM Corporation is under license. *SDXC logo is a trademark. *All other trademarks are the property of their respective holders.

For more information, please visit our website http://www.fujifilm.com/products/digital_cameras/index.html

<http://fujifilm-x.com/x-a5/> 

Specifications are subject to change without notice ©2018 FUJIFILM Corporation

FUJIFILM
Value from Innovation

X-A5



CREATE with CONFIDENCE

Fulfill your creative dreams with a camera that you can always have by your side



01. | WHENEVER

Be prepared to capture any moment with the X-A5

Durable batteries with enough power for 450 photographs

Portable

The slim lightweight design makes the camera easy to carry in your bag.

(01. WHENEVER)

Get connected

The camera can be connected to a smartphone using Bluetooth®, so you can immediately share your photos.

(01. WHENEVER)



02. | WHATEVER

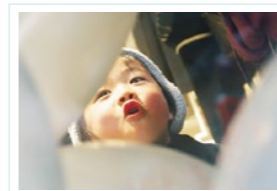
Whether taking photos or taking selfies, bring your ideas to life



Moving subjects

The fast-reacting focus and intuitive touch panel operation help you capture moving objects.

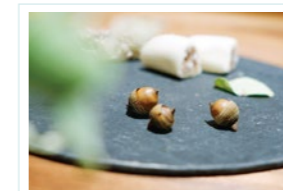
(02. WHATEVER)



Macro

Macro mode lets you shoot objects as close as 5cm away from the lens, meaning you can get closer to your subject.

(02. WHATEVER)

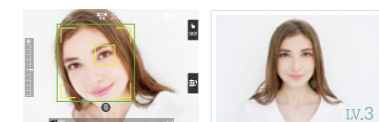


Selfie

Rotating the LCD monitor 180° automatically activates the Eye Detection AF function which focuses on your eyes, letting you take stress-free selfies.

(02. WHATEVER)

The X-A5 features a Portrait Enhancer mode, with three tone options to bring out the beauty of your natural skin color.



180° tilting LCD screen



Advanced Filter

Add an artistic touch and bring out the best side of your subject with in-camera Advanced Filters.

(O3 WHICHEVER)



Fog Remove

This mode deletes foggy tones, bringing out a true feeling of space.

Cross Screen

Make your images sparkle by enhancing the beauty of streetlights and illuminations with the Cross Screen mode.

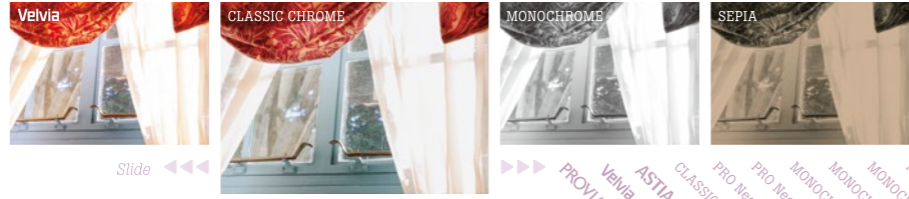
17 filters

- Toy Camera
- Pop Color
- High-key
- Low-key
- Flash-eye
- Dynamic Tone
- HDR Art
- Miniature
- Cross Screen
- Partial Color Red
- Partial Color Orange
- Partial Color Yellow
- Partial Color Green
- Partial Color Blue
- Partial Color Purple
- Fog Remove
- Soft Focus

Film Simulation

Replicate the look of classic film prints with a variety of Film Simulations.

(O3 WHICHEVER)



11 modes

O3 | WHICHEVER

The X-A5 gives you the freedom to harness all of your imagination to create your own special shots

Exposure Compensation
±5EV

Touch & slide

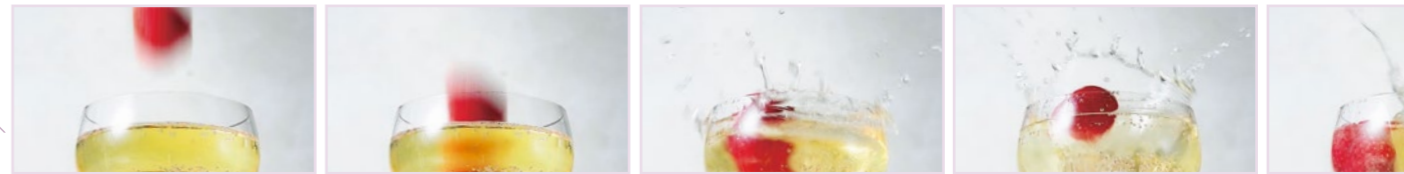


O4 | HOWEVER

Find a new version of everyday scenes by transforming them into something new



Quarter-speed
slow motion
playback



High-speed movies

The X-A5 can record a single moment in great detail, letting you use slow motion playback to witness what you missed with the naked eye.

(O4 HOWEVER)

4K burst shooting

High resolution, high-speed continuous shooting lets you record fast-moving objects. Choose the best shot from the 15 frames taken each second.

(O4 HOWEVER)

4K movies

Capture the world around you in ultra high definition with 4k movie capability, bringing the atmosphere and emotion of a scene to life.

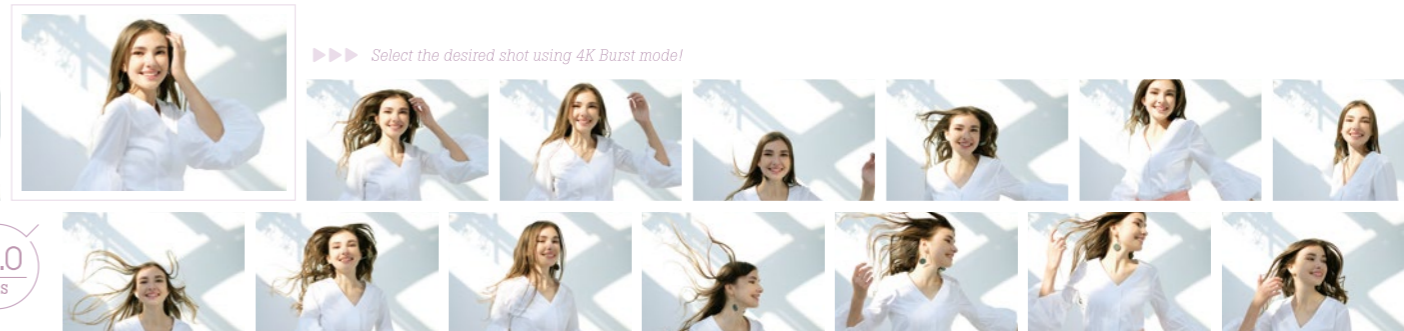
(O4 HOWEVER)

Multi focus

Multi Focus mode automatically composes multi images to generate a sharp image with deep depth of field.

(O4 HOWEVER)

15.0 fps





Super Intelligent Flash

The flash automatically adjusts the amount of light released according to shooting scenes, letting you take natural-looking photographs easily.

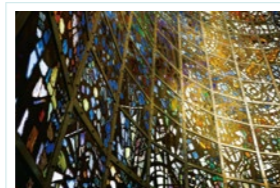
(O5. WHEREVER)



Quiet Venue Mode

Disabling the sound of the shutter and controls lets you focus on discreetly shooting situations such as ceremonies.

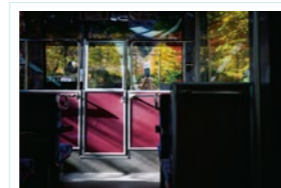
(O5. WHEREVER)



Dark Mode

This mode lets you take handheld images with reduced noise or camera shake, even in low light.

(O5. WHEREVER)



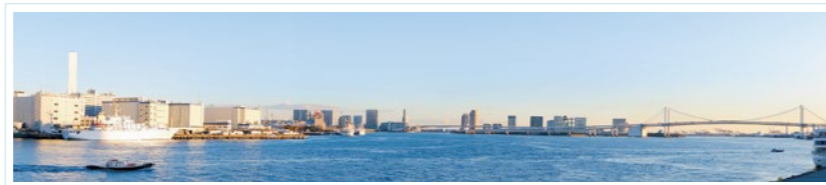
05. WHEREVER

Various functions will support you when taking photographs, giving you the confidence to shoot more

Panorama Mode

The panorama mode automatically adjusts and stitches your images together so you don't have to worry about warping between connected images.

(O5. WHEREVER)



180° 2160 x 9600pxt



120° 2160 x 6400pxt

SPECIFICATIONS



XF15-45mm F3.5-5.6 OIS PZ
Lightweight and compact. Take wide and close up shots with this lens, designed for all situations.



weight: 361g
*including batteries and memory card

TOUCH
Focus selection / shot zoom / slide
Smartphone-like operating feel

(SPECIFICATIONS) DESIGN

The aluminum styling and leather accents produce a stylish camera. Looking like a cool accessory, you'll want to take it everywhere.

Function Button

These convenient buttons can be set to operate frequently used functions of your choice.

- (M) Manual
 - (A) Aperture Priority AE
 - (S) Shutter Priority AE
 - (P) Program AE
 - (SR) Advanced SR Auto
 - (Adv) Advanced Filter
 - (SP) Scene Position
 - (P) Portrait Enhancer
 - (L) Landscape
 - (S) Sport
 - (C) Night
 - (M) Motion Panorama 360°
- Potrait
 - Night
 - Fireworks
 - Sunset
 - Snow
 - Beach
 - Party
 - Flower
 - Text
 - Multiple Exposures

Sub Command Dial

Change various settings, such as checking your subject is in focus, by pressing the dial down to enlarge the image.

ONE HAND OPERATION

Reach all the camera controls with a single hand

Quick Button

Quickly confirm shooting settings, and use the dial to easily change settings.

Creative Button
Use the touch panel to select Advanced Filters and Film Simulation modes.

(SPECIFICATIONS) COLOR

The understated leather finish produces a camera that blends in on all occasions.

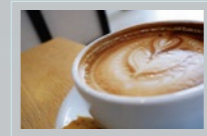


(SPECIFICATIONS) LENS

The camera lens can be changed according to the shooting situation. Harnessing the characteristics of each lens broadens your creative options.



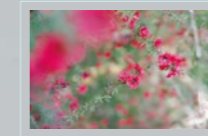
XF23mm F2 R WR



This wide-angle lens lets you capture a balanced view of the subject and its background.



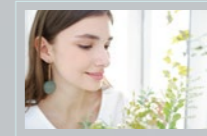
XF35mm F1.4 R



This compact lens achieves mild bokeh and high resolution.



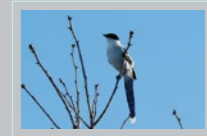
XF50mm F2 R WR



This medium telephoto lens is ideal for both portraits and snapshots



XC50-230mm F4.5-6.7 OIS II



This telephoto zoom lens clearly captures distant subjects.